

Inside left panel, left to right:
Anne Krinsky, *Diagonal Thinking 4* (detail), Acrylic, crayon, pencil on paper, 18" x 15", 2007

Nene Humphrey, *Site* (detail), Mixed media, 11" x 15", 2005

Abbygail Goldstein, *The Contact of Two Chemical Substances* (detail), Charcoal and pencil, 11 1/4" x 30", 2007

Gelah Penn, *Splink #13* (detail), Graphite and acrylic on paper, 26 1/4" x 20", 2003

Inside center panel, left column top to bottom:
Ilene Sunshine, *L.S. #19* (detail), Mixed media, leaves, plastic, and pencil on paper, 10" x 13", 1999

James Jack, *Mindscape # 13* (detail), B-nut on paper, 11" x 30", 2004

Ellen Chuse, *Grand Cascade* (detail), Charcoal and chalk, 42" x 97", 2005

Inside center panel, right column top to bottom:
Elaine Smollin, *Loretta Orchard-Cherry* (detail), Handmade cherry charcoal, 30" x 22", 2004

Dawn Lee, *Shadows on Snow #6* (detail), Aqua pencil on paper, 22" x 30", 2006

Inside right panel, left column top to bottom:
Martin Zet, *Sea Drawing: Pacific / Atlantic* (detail), Ink on paper, 36" x 34", 2006

Claudia Sbrissa, *Mountain & Sky* (detail) Ink, marker, highlighter, 14" x 9.5", 2005

Alicia Wargo, *In Water* (detail), Graphite on paper, 22" x 30", 2005

Elise Kaufman, *Mercedes Storage* (detail), Graphite and india ink on mylar, 9 3/4" x 15 3/8", 2007

This panel, top row, left to right:
Ellen Driscoll, *McMansion Plot* (detail), Ink and pencil on paper, 25 3/4" x 11", 2007

Jiri Komatovský, *Untitled* (detail), Graphite on paper, 6"7" x 14"6"

Joanne Howard, *Sunflower* (detail), Pencil on paper, 40" x 26", 2006

This panel, middle row, left to right:
Richard Howe, *Untitled (Catalog #030322)* (detail), Graphite on Stonehenge paper, 30 1/4" x 44", 2003

Morgan O'Hara, *Live Transmission: Movement of the Hands of Christian Zacharia; piano performance and conducting Mozart: Teatro Donizetti, Bergamo, Italia, May 17, 2001*, Graphite on gray gouache-coated tag board, 37 3/4" x 26 3/4", 2001

This panel, bottom row:
Sherae Rimpsey, *Drawing 1* (syrinx project) (detail), Graphite and gouache on mylar, 11" x 9.5", 2007

The Persistence of Line

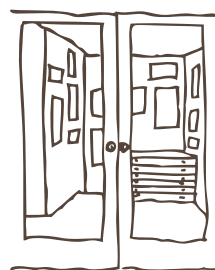
SELECTIONS FROM THE KENTLER FLATFILES

June 6 - July 13, 2008

RECEPTION: June 28, 5 - 8pm **CURATOR'S TALK:** June 28, 4pm

GUEST CURATOR: Charlotta Kotik

ARTISTS: Ellen Chuse • Ellen Driscoll • Abbygail Goldstein • Joanne Howard
Richard Howe • Nene Humphrey • James Jack • Elise Kaufman • Jiri Komatovský
Anne Krinsky • Dawn Lee • Morgan O'Hara • Gelah Penn • Sherae Rimpsey
Claudia Sbrissa • Elaine Smollin • Ilene Sunshine • Alicia Wargo • Martin Zet



**KENTLER
INTERNATIONAL
DRAWING
SPACE**

353 Van Brunt Street,
(Red Hook) Brooklyn, NY 11231-1245
Tel: 718.875.2098
info@kentlertgallery.org
www.kentlertgallery.org

Founded by artists in 1990, the Kentler International Drawing Space has given New York exposure to over 900 artists from around the country and around the world. The Kentler presents shows of important contemporary drawings and work on paper by emerging and under-recognized American and international artists and works energetically and creatively to integrate these shows into the cultural fabric of the community. We encourage dialogue and interaction between exhibiting artists and the public while providing artists with the opportunity to experiment, explore, and expand the definition of art in society.

Exhibitions, events and public programs are sponsored, in part, with public funds from The New York State Council on the Arts, a state agency; The New York City Department of Cultural Affairs; and Brooklyn Borough President, Marty Markowitz. Other sponsors include: The Andy Warhol Foundation for the Visual Arts; Independence Community Foundation; Carnegie Corporation of New York; The Fort Trustee Fund, Community Foundation of the Chattahoochee Valley; Agnes Gund and Daniel Shapiro; Milton and Sally Avery Arts Foundation; The Fifth Floor Foundation; The Gifford Foundation; Art on Paper; Epson America Inc.; Materials for the Arts; NYC Department of Cultural Affairs/NYC Department of Sanitation/NYC Department of Education; and the many valued artists, friends and supporters of the gallery. Kentler International Drawing Space, Inc. is a 501(c)(3) nonprofit organization.

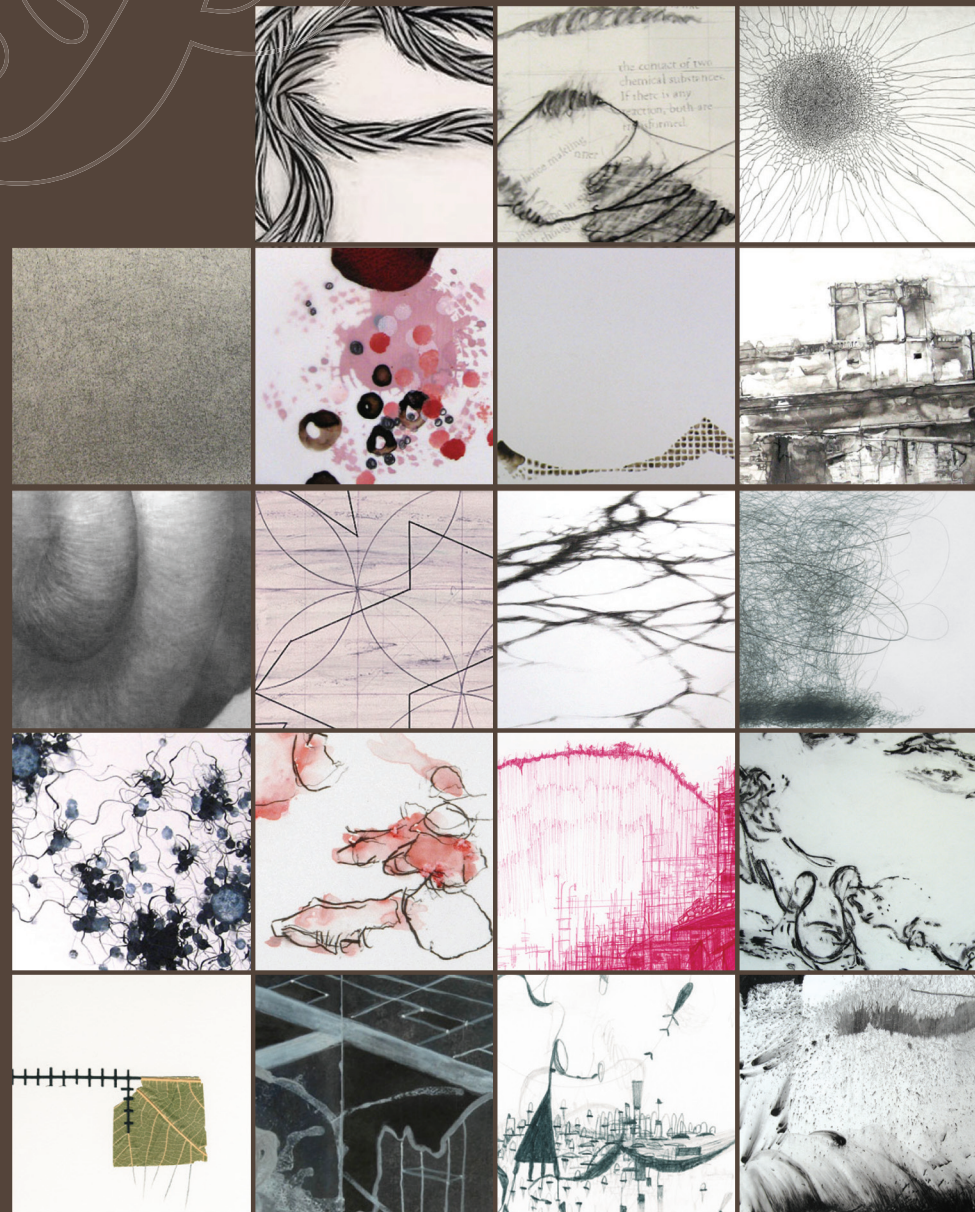
Directions: "F" or "A" train to Jay St./Borough Hall, Outside take the B61 Bus to Red Hook, Wolcott St. stop. Check our web site for a map.

Designed by riveredgedesign.net



The Persistence of Line

SELECTIONS FROM THE KENTLER FLATFILES



KENTLER INTERNATIONAL DRAWING SPACE