



Carol Prusa, *Delphys*, 2008, silverpoint, ground graphite, titanium white pigment with acrylic binder on acrylic dome with aluminum leaf and fiber optics, 24 x 24 x 12 inches. Courtesy of the artist and Bernice Steinbaum Gallery.



Susan Schwalb, *Strata #502*, 2008, silver/aluminum/gold/copper/brasspoint on clay coated paper, 12 x 12 inches. Courtesy of the artist

# REINVENTING SILVERPOINT

*AN ANCIENT TECHNIQUE FOR THE 21<sup>ST</sup> CENTURY*

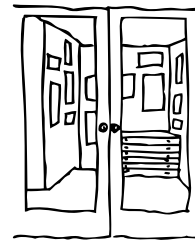
**September 11 - October 25, 2009**

Opening Reception Friday, September 11, 6 - 9 pm

Curators' Talk: Saturday, October 10, 4 pm

Curated by Susan Schwalb and Margaret Mathews-Berenson

Artists: Marietta Hoferer, Cynthia Lin, Natalie Loveless,  
Carol Prusa, Susan Schwalb



**KENTLER  
INTERNATIONAL  
DRAWING  
SPACE**

353 Van Brunt Street,  
(Red Hook) Brooklyn, NY 11231-1245  
Tel: 718.875.2098  
info@kentlergallery.org  
www.kentlergallery.org

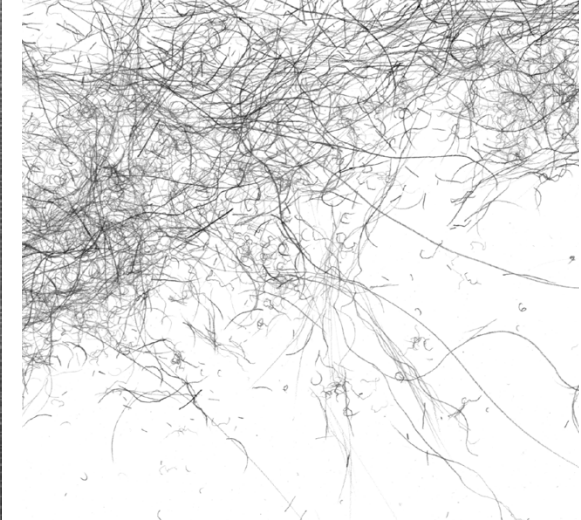
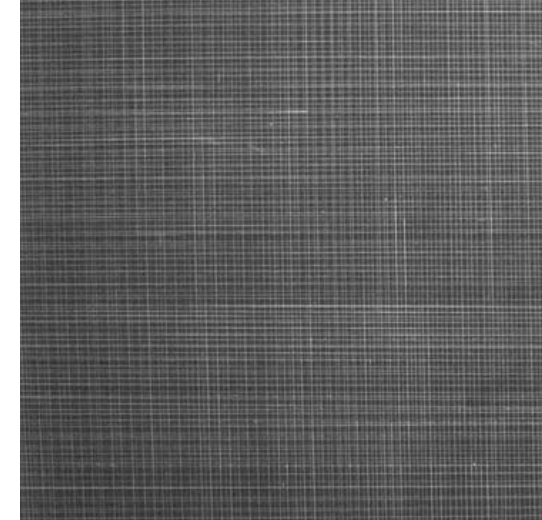
Founded by 2 artists in 1990, the Kentler International Drawing Space has given New York exposure to over 1000 artists from around the country and around the world. The Kentler presents shows of important contemporary drawings and work on paper by emerging and under-recognized American and international artists and works energetically and creatively to integrate these shows into the cultural fabric of the community. We encourage dialogue and interaction between exhibiting artists and the public while providing artists with the opportunity to experiment, explore and expand the definition of art in society.

Kentler International Drawing Space, Inc. is a 501(c)(3) nonprofit organization. Exhibitions, events and public programs are made possible with public funds from the New York State Council on the Arts, a state agency (NYSCA); the New York City Department of Cultural Affairs and Brooklyn Borough President, Marty Markowitz.

Other sponsors include: the Andy Warhol Foundation for the Visual Arts, Carnegie Corporation of New York; the Fort Trustee Fund, Community Foundation of the Chattahoochee Valley; Agnes Gund; The Fifth Floor Foundation; the Gifford Foundation; Art on Paper; Epson America Inc.; Utrecht Art Supplies; Materials for the Arts, NYC Department of Cultural Affairs /NYC Department of Sanitation/ NYC Department of Education and the many valued artists, friends and supporters of the gallery. K.I.D.S. Art Education support: Independence Community Foundation; the Mark D. Hostetter and Alexander N. Habib Foundation; Todd and Desiree Jeffcoat; Leslie and Jim Kerby; and BRIC Arts/Media/Brooklyn and the Brooklyn Arts Council (BAC) Community Arts Regrant Program for Arts in Education, funded by NYSCA's Arts in Education Program.

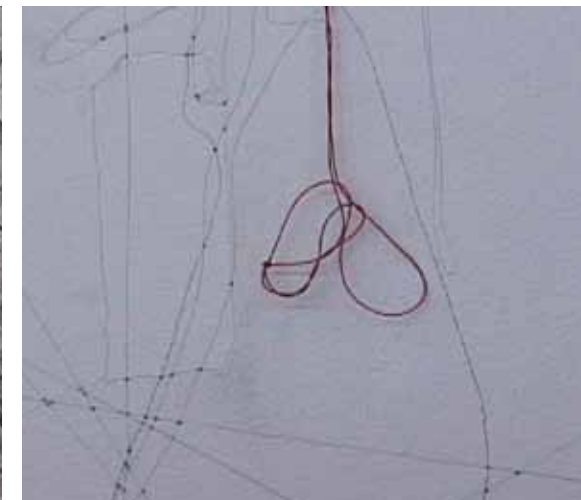
Directions: "F" or "A" train to Jay St./Borough Hall, Outside take the B61 Bus to Red Hook, Wolcott St. stop.  
Check our Web site for a map at [www.kentlergallery.org](http://www.kentlergallery.org).

Designed by [riveredgedesign.net](http://riveredgedesign.net)



# REINVENTING SILVERPOINT

*AN ANCIENT TECHNIQUE  
FOR THE 21<sup>ST</sup> CENTURY*



**KENTLER INTERNATIONAL DRAWING SPACE**