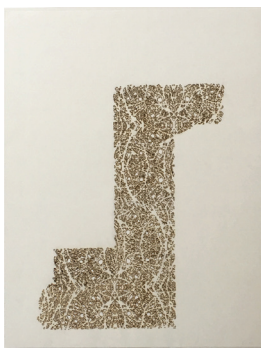




14



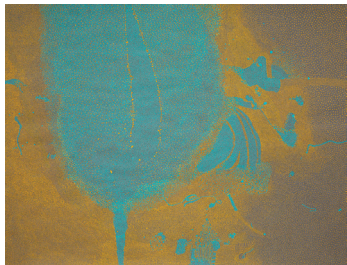
15



20



18



17



23



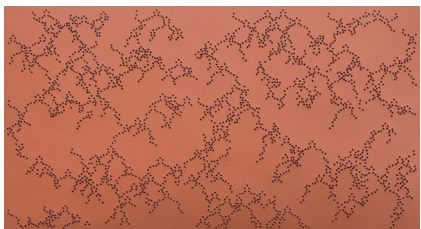
24



21



22



19



25

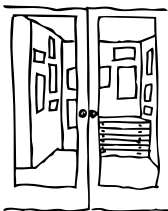
MAPPING SPACES: *Carte Blanche*

Selections from the Kentler Flatfiles

June 12 – July 24, 2016

Curator's Talk & Opening Reception:
Sunday, June 12, 4 – 6pm

1. David Ambrose, *A Silent Spanish Fury*, watercolor and gouache on pierced paper, 30" x 22", 2012
2. Cynthia Back, *Las 99 Semillas: Del Notre y Del Sur*, etching, linocut, aquatint, chine colle, 12" x 18", 2012
3. Ken Buhler, *Notes from the Edge of the World*, intaglio, AP 2/4, 16" x 11.25", 2011
4. Beth Caspar, *Dancing with D'Arcy Thompson*, linocut, ed. 4/10, 24" x 26.5", 2011
5. Gail Flanery, *Junction*, monotype and chine colle, 11" x 14.75", 2014
6. Felipe Goes, *A14N33*, acrylic on paper, 11.75" x 18", 2014
7. Keiko Hara, *Verse-SUKUMU 2*, monoprint, 22" x 15", 2011
8. Carter Hodgkin, *After-Effect 2*, watercolor, gouache on paper, 24" x 18", 2002
9. Meredith Hoffheins, *Crevasse in Springtime*, acrylic on Stonehenge paper, 10.25" x 15", 2015
10. Katherine Jackson, *Bridge I*, graphite on paper, 9" x 12", 2015
11. Kumi Korf, *Sussuro/Whisper*, line etching and spit-bite aquatint, AP, 19.5" x 15.5", 1999
12. Jiří Kormatovský, *Meditation*, graphite on paper, 15.25" x 19.5", 1992
13. Karen Helga Maurstig, *Lines in Ice, Variation I*, mokuhanga, ed. 2/25, 19.5" x 14", 2010
14. Jim Napierala, *Bandaleon*, mixed media on veneer, 13" x 12", 2007
15. Florence Neal, *Red Hook Islands*, mokuhanga, AP, 14" x 11", 2013
16. Susan Newmark, *Body Parts Series: Central Supports/Spine*, collage, thread on paper, 28" x 22", 2005
17. Paula Overbay, *Lake*, acrylic on paper, 18" x 24", 2012
18. Beverly Ress, *Bachman's Warbler (After Audubon)*, colored pencil and cuts on paper, 30" x 22.5", 2012
19. Taney Roniger, *Bifurcations Series (Copper #1)*, pin pricks and metallic paint on paper, 15" x 27.5", 2014
20. Donna Ruff, *Osiris*, burns on paper, 30" x 22", 2007
21. Andra Samelson, *Cosmologies 1*, acrylic on paper, 30" x 22", 2012
22. Claudia Sbrissa, *Castellfranco*, ink on paper, 11.75" x 15.75", 2009
23. Robert Schwinger, *Rain Song*, watercolor on paper, 30" x 22", 1995
24. Audrey Stone, *#34*, pencil and thread on paper, 17" x 14", 2010
25. Martin Zet, *Untitled*, ink and rainwater on paper, 26" x 40", 1999



KENTLER INTERNATIONAL DRAWING SPACE

353 Van Brunt Street, (Red Hook)
Brooklyn, New York 11231
718.875.2098
info@kentlergallery.org
www.kentlergallery.org

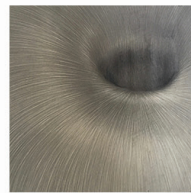
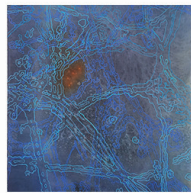
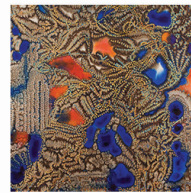
Cuomo and the New York State Legislature; The New York City Department of Cultural Affairs in partnership with the City Council. **Other Supporters Include:** The Fort Trustee Fund, CFCV; Heckscher Foundation for Children; The Thompson Family Foundation; Lily Auchincloss Foundation; Robert Lehman Foundation; The Athena Foundation; The Gifford Foundation; Postindustrial Productions Inc.; MVS Studio Inc.; Movers Not Shakers; Epson America Inc.; Materials for the Arts, NYC Department of Cultural Affairs /NYC Department of Sanitation/ NYC Department of Education; the many valued artists, friends & supporters of the gallery. Special thanks for pro-bono legal advice: Lawyers Alliance for New York. [http:// www.kentlergallery.org/support.html](http://www.kentlergallery.org/support.html)

This exhibition is made possible in part by a grant from the Robert Lehman Foundation. We thank them for their generous support of the arts.

Designed by riveredgedesign.net

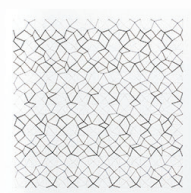
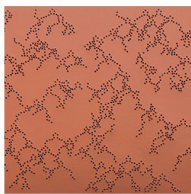
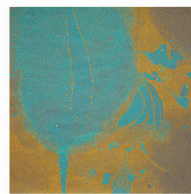


Lily Auchincloss Foundation, Inc.



MAPPING SPACES: *Carte Blanche*

Selections from the Kentler Flatfiles



KENTLER INTERNATIONAL DRAWING SPACE